

Anchor, Bronze Wedge 1.90" O.D., part number 24010-00

The anchor will be of the wedge type and shall be designed to support a 1.90" O. D. stainless steel rail. A wedge shoe shall be employed, applying pressure to the retained rail and providing support.

Anchor Body

The anchor body shall be fabricated from CDA C87500 bronze alloy. The body component of the anchor shall be cast, ensuring consistent strength, ductility, and resistance to impact and it shall incorporate provisions for anti-rotation. The anchor body shall be 4" deep and shall be 1.90" inside diameter, ± 0.02". Close tolerance dimensions shall ensure a secure fit for railings.

Wedge

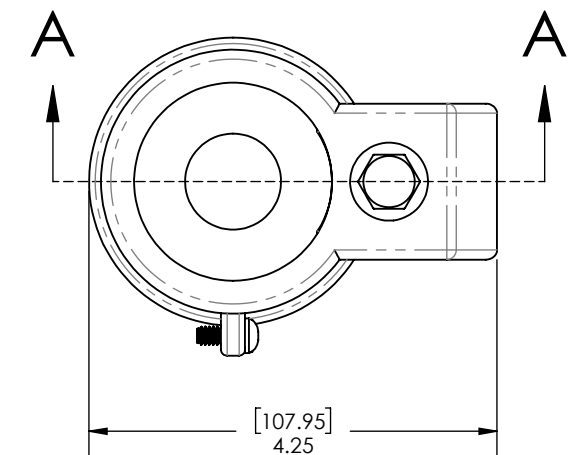
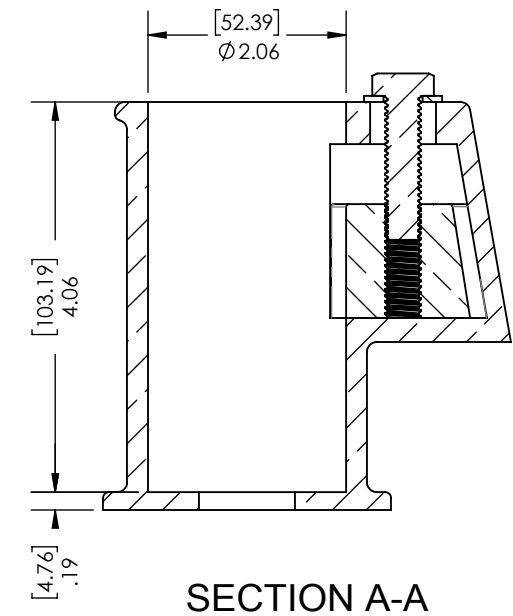
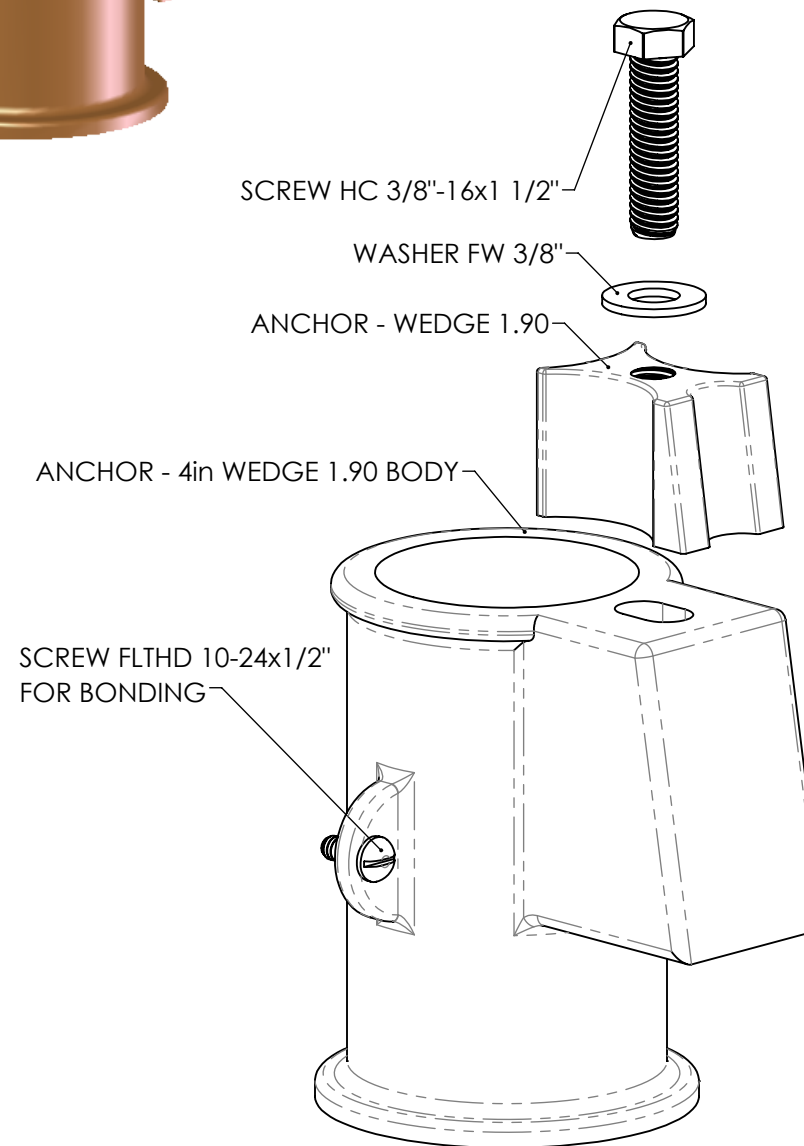
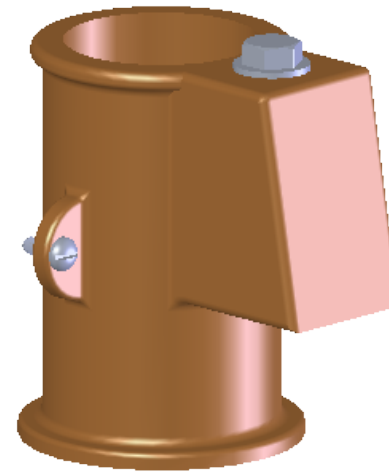
A cast bronze wedge shall be employed as the rail retainer. The wedge shall incorporate an 18-8-stainless steel 5/16-18-hexhead tightening bolt and flat washer. The wedge shall be designed as the sacrificial element to the anchor system, allowing for ease of repair and maintenance.

Bonding

A bonding screw shall be provided on the lower portion of the anchor. The bonding screw will be 18-8-stainless steel.

Warranty

Spectrum Standard



A PLAYCORE Company

7100 Spectrum Lane Missoula, Montana 59808
800.791.8056 www.spectrumaquatics.com

ENGINEERING DATA

PRODUCT:	ANCHOR - 4in WEDGE 1.90 -			
MODEL #:	24010	CATALOG #:	24010-00	REVISION: A
MATERIAL:	BRONZE - STAINLESS STEEL			
FINISH #:	MILL			

NOTE:

△ DIMENSIONS VARY WITH SPECIFIC APPLICATIONS. SPECIFICATIONS ARE NOMINAL AND ARE SUBJECT TO CHANGE. PLEASE CONTACT SPECTRUM AQUATICS FOR CUSTOM APPLICATIONS