

2.4 GHz Wireless Adapter (WA-2)



User Guide

F987 Rev. 201605



Customer Service Department

www.coloradotime.com

Email: customerservice@coloradotime.com

Phone: 970-667-1000

Toll Free U.S. /Canada 800-287-0653

Fax: 970-667-1032

Colorado Time Systems

Corporate Office
1551 East 11th Street
Loveland, CO 80537 USA

Sales: 1-800-279-0111 or +1 970-667-1000

Service: 1-800-287-0653 or +1 970-667-1000
Service Fax: 970-667-1032

Web: www.coloradotime.com
Email: customerservice@coloradotime.com

Information in this manual is subject to change without notice. Pictures and illustrations may not accurately depict your version. Please check our website for the most current information; our user manuals are available online in the customer service section of our website.

Part Number F987, Rev. 201605
©2016 Colorado Time Systems. All rights reserved.

Table of Contents

Physical connection to data source.....	1
Physical connection to scoreboard or display	2
Set the WA-2 switches	3
Antenna.....	4
Mounting Considerations	4
To Locate Assigned COM Port:	5
Standards followed	6
European Declaration of Conformity.....	7

The WA-2 wireless adapter is easy to set up and requires no user intervention once set up. Required cables are included with the WA-2 unless specifically noted. Set up details vary according to what you are using it to do. Please select from the options below.

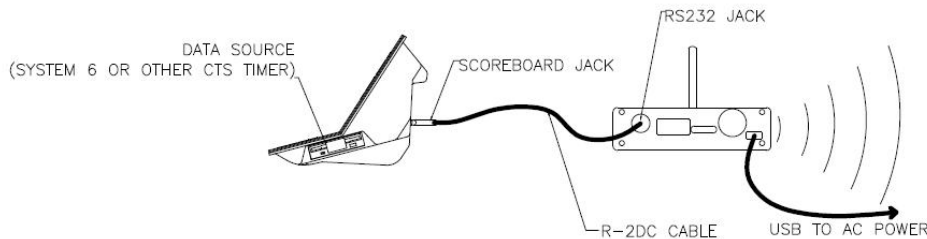
There are 3 parts to set up:

- Physical connection to data source
- Physical connection to display
- Set the switches on the WA-2(s)

Physical connection to data source

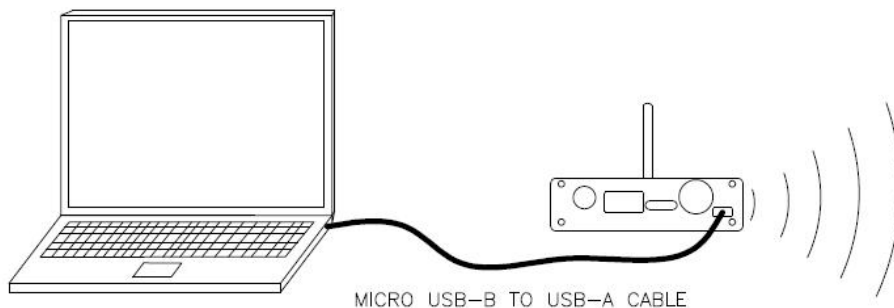
Scoreboard data can come from a System 6 or other CTS console, from a laptop running SynchroMM software, or from a wireless scoreboard controller (tabletop or handheld). Wireless scoreboard controllers can send data to a WA-2.

System 6 or other CTS Timer



Connect WA-2 to AC power with the USB power adapter, and to the System 6 with R-DC cable.

Laptop running SynchroMM or other CTS software



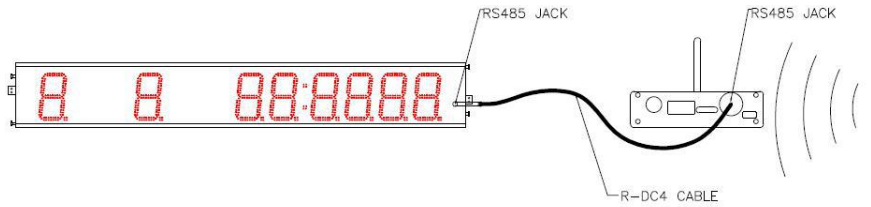
Connect WA-2 to USB on the laptop computer with Micro USB-B to USB-A cable (R-015-203). Laptop will assign a COM port number which must be selected within SynchroMM as the input. (Refer to instructions in the back of this manual on locating assigned COM port.)

Wireless Scoreboard controller (WTTC-1 or WHC-1)

No WA-2 required for transmitting.

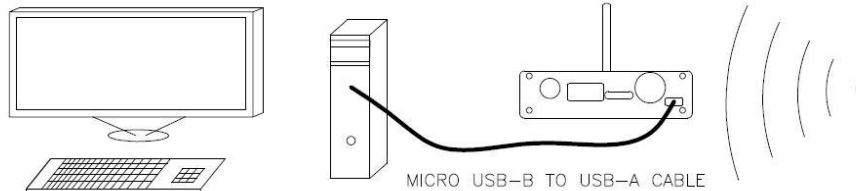
Physical connection to scoreboard or display

Display on CTS Aquatic Scoreboard



To display data on LED-R scoreboard(s) or P01-style mini scoreboard(s), connect WA-2 to scoreboard with R-DC4 cable. Power comes to the WA-2 from the scoreboard. If you have multiple scoreboards, connect them to each other with R-DC4 cables (ordered separately).

Display on Video Board



Connect WA-2 to USB on the Display Link Plus (DL+) computer with a Micro USB-B to USB-A cable (R-015-203). Power comes to the WA-2 via USB from the computer. Computer will assign COM Port number which must be selected within Display Link Plus (DL+) as the input. (Refer to instructions in the back of this manual on locating assigned COM port.)

Display on Multisport Scoreboard(s)

Multisport scoreboards can receive data wirelessly from a WA-2 set to the same channel and PAN ID as the scoreboard. Do not try to connect a second WA-2 to the multisport scoreboard.

Switch settings for the WA-2 Adapter

Disconnect from power before changing the switches (labeled CONFIG). The channel and PAN ID on sending device and the channel and PAN ID on the receiving devices must match each other.

DIP switch settings

Channel	Switch 1	Switch 2	Switch 3	Switch 4
0	Up	Up	Up	Up
1	Down	Up	Up	Up
2	Up	Down	Up	Up
3	Down	Down	Up	Up
4	Up	Up	Down	Up
5	Down	Up	Down	Up
6	Up	Down	Down	Up
7	Down	Down	Down	Up
8	Up	Up	Up	Down
9	Down	Up	Up	Down
10	Up	Down	Up	Down
11	Down	Down	Up	Down

Pan ID	Switch 5	Switch 6	Switch 7
0	Up	Up	Up
1	Down	Up	Up
2	Up	Down	Up
3	Down	Down	Up
4	Up	Up	Down
5	Down	Up	Down
6	Up	Down	Down
7	Down	Down	Down
MODE	Switch 8		
Down	For System 6 water polo to multisport scoreboards		
Up	For all other applications		

Set the WA-2 switches

If using two WA-2s, they must be set to the same Channel and PAN IDs.

Aquatic data from System 6 (including swimming, diving and training pace clock)

Set the two WA-2s set to the same Channel and PAN IDs. Set switch 8 UP on both WA-2s.

From laptop running SynchroMM

Set the two WA-2s set to the same Channel and PAN IDs. Set switch 8 UP on both WA-2s.

From Wireless Tabletop (WTTC-1) or Handheld (WHC-1) controller to the Display Link Plus (DL+) computer that controls the video board

Set the WA-2 and the wireless controller to the same Channel and PAN IDs. Set switch 8 UP on the WA-2.

Water Polo from System 6

NOTE: System 6 Water Polo definitions MUST be set to default when used with a WA-2.

To display data from a System 6 in Water Polo on multisport scoreboard(s) set the one WA-2 to the same Channel and PAN ID as the scoreboard(s). Set switch 8 DOWN on the WA-2. **NOTE:** The Multisport series board must be set to address 1 when switch 8 is in the down position. (*Multisport scoreboards can be identified by part numbers beginning with "MS-" including deck clocks, portable scoreboards, and multisport mini scoreboards. The unit's part number is printed on the serial number label on the right side of the enclosure*)

To display data from a System 6 in Water Polo on LED-R or P01-style mini scoreboard(s), set the two WA-2s to the same Channel and PAN ID. Set switch 8 UP on both WA-2s.

To display data from a System 6 in Water Polo on a video board, set the two WA-2s to the same Channel and PAN ID.

If you have any multisport scoreboards in this system (deck clocks, etc.), set switch 8 DOWN on both WA-2s. In DL+, use Water Polo Multisport Template items and CTS multisport interface. **NOTE:** The multisport series board must be set to address 1 when switch 8 is in the down position. *(Multisport scoreboards can be identified by part numbers beginning with "MS-" including deck clocks, portable scoreboards, and multisport mini scoreboards. The unit's part number is printed on the serial number label on the right side of the enclosure)*

If you have any CTS aquatic scoreboards in this system (LED-R, P01-style), set switch 8 UP on both WA-2s. In DL+, use Water Polo Template items and CTS aquatic interface.

Antenna

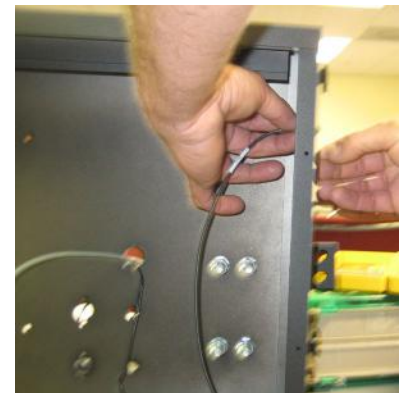
Screw the antenna into the wireless adapter, and position it so that it is pointing up.

Mounting Considerations

The WA-2 wireless radio will transmit through non-metallic obstructions with minimal attenuation. Take care that when you mount the radio, you are not placing it in a location where a metal object will significantly block the line of sight from the transmitter to the receiver.

Many facilities place the WA-2 inside an LED-R scoreboard sign panel. To do this, enlarge the hole in the back of the sign panel enclosure to accommodate the data cable and the power cable.

At an outdoor installation, the sign itself is made of a Dibond, a metal bonded material. This means the antenna should be placed outside the enclosure. Use the antenna mounting extension cable (R-015-638), which is sold separately. Drill a 1/4" hole to mount the antenna outside the enclosure. Remove the nut and washer from the one end of the coaxial cable (R-015-638). Push this threaded end of the coaxial cable through the antenna hole from inside of the case. Secure it with the nut and washer from outside the case. You will need two 5/16" wrenches to do this. If the 1/4" nut securing the coaxial cable to this fitting is loose, tighten it.

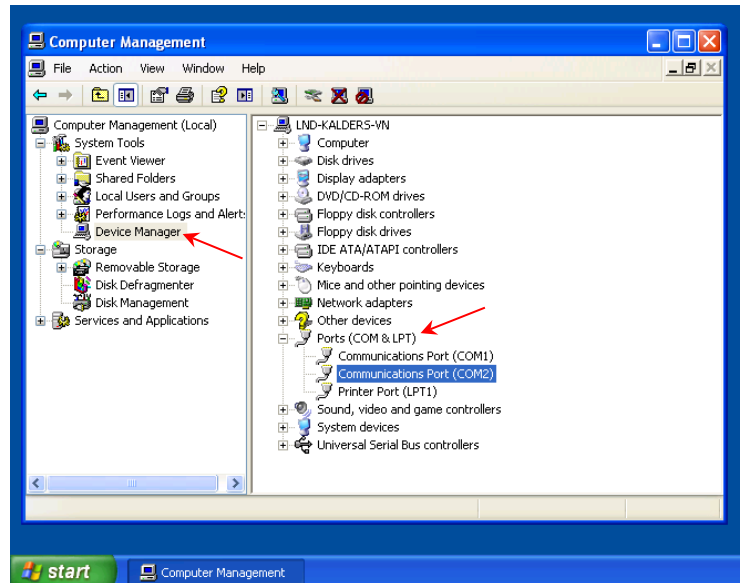


Technical Data:

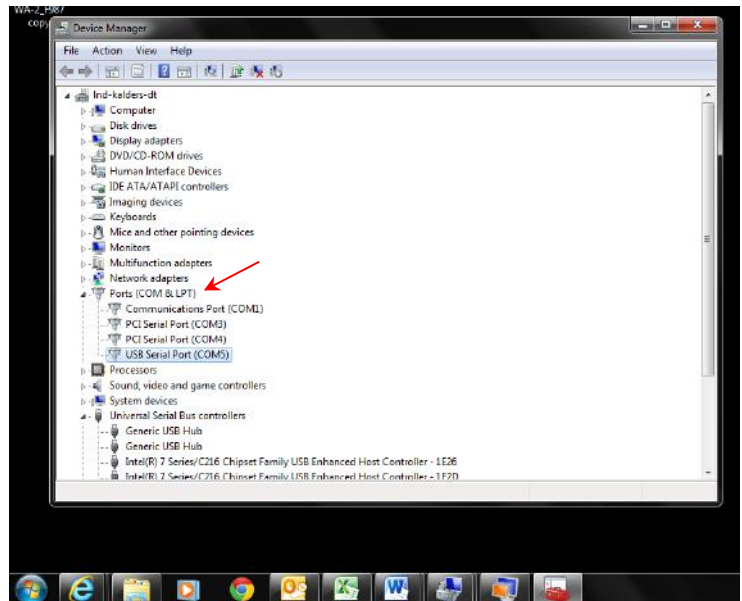
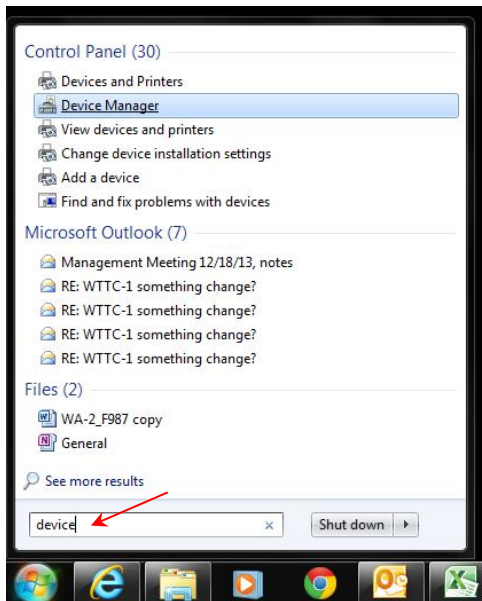
DC 5V, 500 mA

To Locate Assigned COM Port:

Windows XP: Click start button, right-click on Computer, click Manage, click on Device Manager in left pane, click on Ports in right pane.



Windows 7 & 8: Click on start button, type “device” in search, click on device manager in results, click on Ports.



Standards followed

UL 60950-1 Issued: 2007/03/27 Ed: 2 Rev: 2011/12/19 UL Standard for Safety for Information Technology Equipment Safety Part 1: General Requirements

CSA C22.2#60950-1 Issue: 2007/03/27 Ed: 2 Rev: 2011/12/19 Standard for Safety for Information Technology Equipment Safety Part 1: General Requirements
FCC 47CFR 15B cIB
Issued: 2011/04/21 Title 47 CFR Part 15 Subpart B Unintentional Radiators Class A Verification
ICES 003

Issue: 2004/01/01 Issue No.4 Interference-Causing Equipment Standard, Digital Apparatus
European Council Directive 2006/95/EC (December 12, 2006) on Low Voltage Equipment Safety Standards used:
IEC 60950-1: 2005 (2nd Edition) and EN 60950-1:2006 Information technology equipment – Safety – Part 1: General requirements

European Council Directive 2004/108/EC (December 15, 2004) on Electromagnetic Compatibility Standards used:
CENELEC EN 55022 Issue: 2010/12/01 Information Technology Equipment – Radio Disturbance Characteristics – Limits and Methods of Measurement, Includes COR 2011: 2011/10/01
CENELAC EN 55024 Issue: 2010/11/01 Information Technology Equipment – Immunity Characteristics - Limits and Methods and Measurement
CENELEC EN 61000-6-1 Issued: 2007/01/01 Electromagnetic Compatibility (EMC) Part 6-1: Generic Standards – Immunity for Residential, Commercial and Light-Industrial Environments
CENELEC EN 61000-6-3 Issued: 2007/01/01 Electromagnetic Compatibility (EMC) Part 6-3: Generic Standards – Emission Standard for Residential, Commercial and Light-Industrial Environments

European Council Directive 2011/65/EU (July 21, 2011) on the Reduction of Hazardous Substances (RoHS)

European Council Directive 2002/96/EC 27 January 2003 on waste electrical and electronic equipment (WEEE)

FCC Compliance Statement for WA-2 Wireless Adapter

This device complies with Part 15 of the FCC Rules. Operation is subject to the following two conditions:

1. This device may not cause harmful interference.
2. This device must accept any interference received, including interference that may cause undesired operation.

This equipment has been tested and found to comply with the limits for a Class A digital device, pursuant to Part 15 of the FCC Rules. These limits are designed to provide reasonable protection against harmful interference when the equipment is operated in a commercial environment. This equipment generates, uses, and can radiate radio frequency energy and, if not installed and used in accordance with the instruction manual, may cause harmful interference to radio communications. Operation of this equipment in a residential area is likely to cause harmful interference in which case the user will be required to correct the interference at his own expense.

Unauthorized modifications or changes made to this device not expressly approved by the party responsible for compliance voids the user's authority to operate the equipment.

Contains: FCC ID OUR-XBEEPRO, 2.4GHz transmitter
Contains: Model xBeePRO Radio, IC: 4214-XBEEPRO

European Declaration of Conformity

We,

Everlast Climbing Industries, Inc.
DBA Colorado Time Systems
1551 E 11th Street
Loveland, CO 80537, USA
++1 970 667 1000
www.coloradotime.com



declare under our sole responsibility that the

Product: Wireless Adapter, 2.4 GHz
Model numbers: WA-2

to which this declaration relates is in conformity with the following European Directives:

European Council Directive 2006/95/EC (December 12, 2006) on Low Voltage Equipment Safety Standards used:

IEC 60950-1: 2005 (2nd Edition) and EN 60950-1:2006 Information technology equipment – Safety – Part 1: General requirements

European Council Directive 2004/108/EC (December 15, 2004) on Electromagnetic Compatibility Standards used:

CENELEC EN 55022 Issue: 2010/12/01 Information Technology Equipment – Radio Disturbance Characteristics – Limits and Methods of Measurement, Includes COR 2011: 2011/10/01

CENELAC EN 55024 Issue: 2010/11/01 Information Technology Equipment – Immunity Characteristics - Limits and Methods and Measurement

CENELEC EN 61000-6-1 Issued: 2007/01/01 Electromagnetic Compatibility (EMC) Part 6-1: Generic Standards – Immunity for Residential, Commercial and Light-Industrial Environments

CENELEC EN 61000-6-3 Issued: 2007/01/01 Electromagnetic Compatibility (EMC) Part 6-3: Generic Standards – Emission Standard for Residential, Commercial and Light-Industrial Environments

European Council Directive 2011/65/EU (July 21, 2011) on the Reduction of Hazardous Substances (RoHS)

European Council Directive 2002/96/EC 27 January 2003 on waste electrical and electronic equipment (WEEE)

The Technical Construction File is maintained at the corporate headquarters of Colorado Time Systems in Colorado, USA.

Date of issue: December 20, 2013
Place of issue: Loveland, Colorado, USA

X

Michael Medina-Brodsky
Director of Manufacturing and Technology



Customer Service Department

www.coloradotime.com

Email: customerservice@coloradotime.com

Phone: 970-667-1000

Toll Free U.S. and Canada 800-287-0653

Fax: 970-667-1032