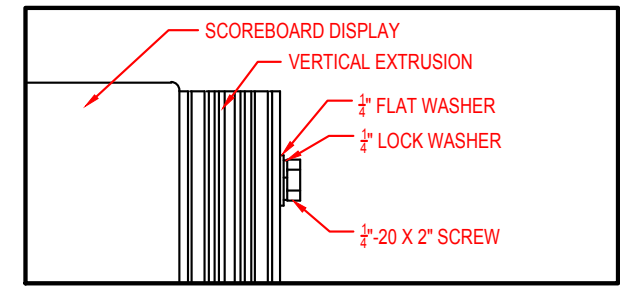


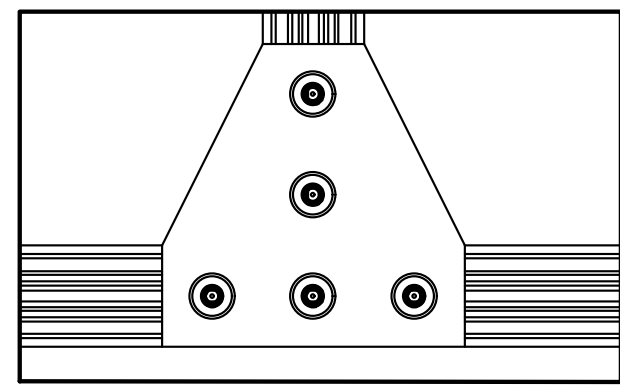
**INSTALLATION PROCEDURE:**

1. ATTACH VERTICAL EXTRUSION PIECES TO SCOREBOARD USING THREADED INSERTS AND 1/4" HARDWARE



DETAIL A  
EXTRUSION-SCOREBOARD ATTACHMENT  
4 LOCATIONS PER EXTRUSION  
8 LOCATIONS TOTAL

2. SECURE VERTICAL EXTRUSION PIECES TO BASE OF CADDY USING INCLUDED PLATE AND HARWARE



DETAIL B  
EXTRUSION-CADDY ATTACHMENT  
2 LOCATIONS

**NOTES:**

- THE DISPLAY IS EQUIPPED WITH A 14' POWER CABLE WITH A NEMA 5-15R PLUG. NOTE THE EXIT LOCATION IS ON THE BOTTOM OF THE DISPLAY. THIS CABLE IS ONLY TO BE USED IN EITHER INDOOR APPLICATIONS OR OUTDOOR APPLICATIONS IN CONJUNCTION WITH AN OUTDOOR RATED RECEPTACLE. POWER CABLE CAN BE REROUTED TO EXIT THE REAR OF THE DISPLAY BY A CERTIFIED ELECTRICIAN.
- THIS SIGN IS INTENDED TO BE INSTALLED IN ACCORDANCE WITH THE REQUIREMENTS OF ARTICLE 600 OF THE NATIONAL ELECTRIC CODE AND/OR OTHER APPLICABLE CODES. THIS INCLUDES PROPER GROUNDING AND BONDING OF THE SCOREBOARD
- DO NOT USE IN WIND APPLICATIONS

|     |                        |            |     |
|-----|------------------------|------------|-----|
| B   | UPDATED TO CADD-MINI-5 | 2019/06/07 | VB  |
| A   | INITIAL RELEASE        | 7/15/14    | PJS |
| REV | DESCRIPTION            | DATE       | APP |

THE INFORMATION ON THIS DRAWING IS SUBJECT TO CHANGE WITHOUT NOTICE

**REVISIONS**

THIRD ANGLE PROJECTION

**TRADE SECRET**

The information and data contained herein is secret and is submitted in confidence, and shall not be disclosed, used, or duplicated for any purpose whatsoever without the prior written permission of Colorado Time Systems, Inc., 1551 E. 11th Street, Loveland Colorado, 80537. This legend shall be marked on any reproduction hereof in whole or in part. Receipt of this document shall be deemed to be an acceptance of the conditions specified herein.

DIMENSIONS ARE REPRESENTED AS FOLLOWS: INCH [MM]

|                            |              |
|----------------------------|--------------|
| TOLERANCES EXCEPT AS NOTED |              |
| INCHES                     | MM           |
| X ± 0.02                   | X ±          |
| ANGLES ± 1                 |              |
| DO NOT SCALE THIS DRAWING  |              |
| SCALE                      | SHEET 1 OF 2 |

|               |         |
|---------------|---------|
| DRAWN BY      | DATE    |
| P.SCHIEL      | 2/19/14 |
| ENG. APPROVAL | DATE    |
| PROJECT ENG.  | DATE    |

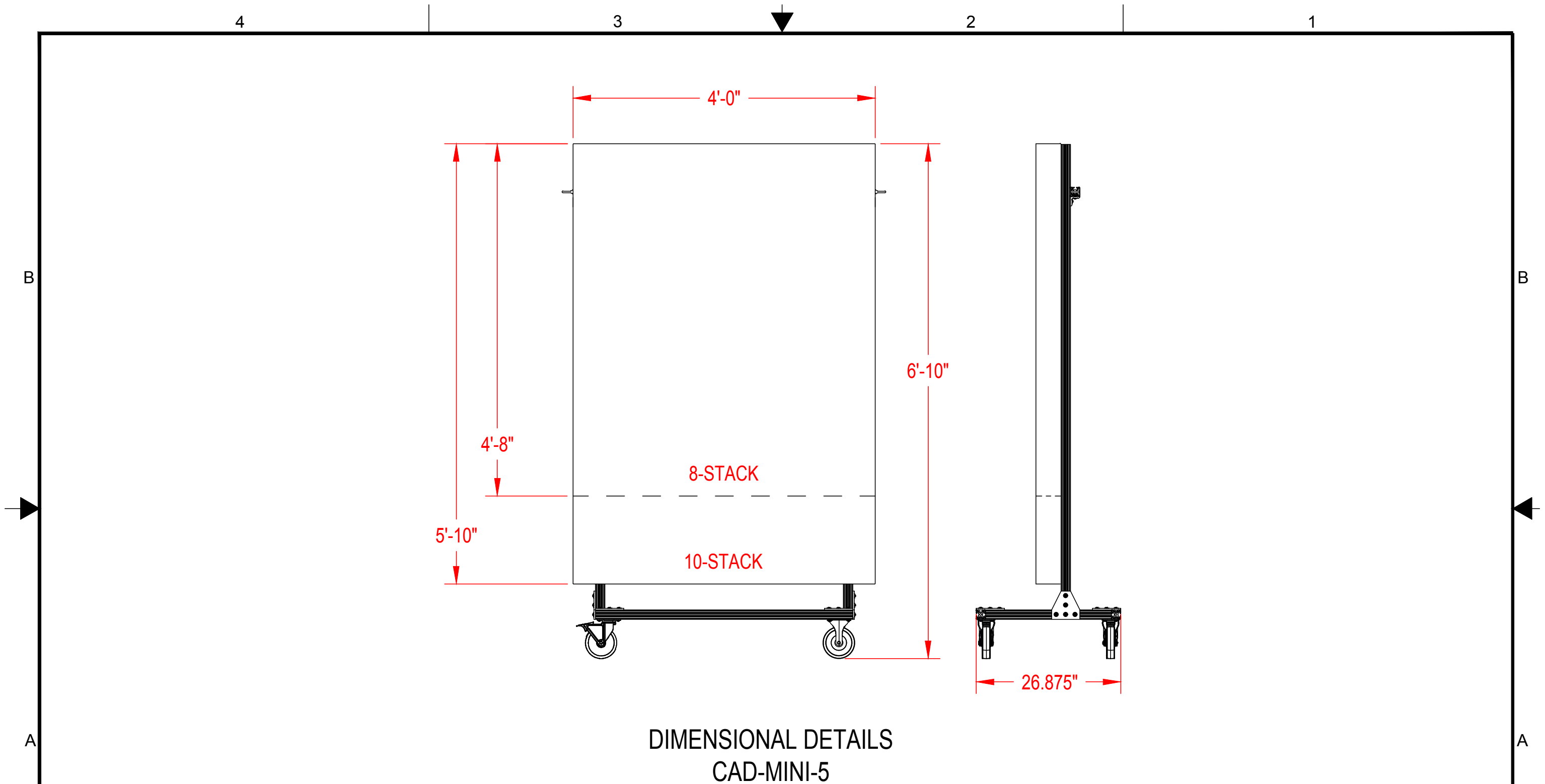
**TITLE**

5" MULTI-LINE  
CADDY MINI-5 MOUNT  
INSTALL DETAILS

**WWW.COLORADOTIME.COM**

1551 E. 11th. St.  
Loveland, CO 80537  
P: (970) 667-1000  
F: (970) 667-5876  
WWW.COLORADOTIME.COM

|      |                |      |
|------|----------------|------|
| SIZE | DRAWING NUMBER | REV. |
| B    | S2014-001-001  | A    |



DIMENSIONAL DETAILS  
CAD-MINI-5

|     |                 |         |     |
|-----|-----------------|---------|-----|
| A   | INITIAL RELEASE | 7/15/14 | PJS |
| REV | DESCRIPTION     | DATE    | APP |

THE INFORMATION ON THIS DRAWING IS SUBJECT TO CHANGE WITHOUT NOTICE

**WWW.COLORADOTIME.COM**

**REVISIONS**

|                        |                     |
|------------------------|---------------------|
| THIRD ANGLE PROJECTION | <b>TRADE SECRET</b> |
|------------------------|---------------------|


The information and data contained herein is secret and is submitted in confidence, and shall not be disclosed, used, or duplicated for any purpose whatsoever without the prior written permission of Colorado Time Systems, Inc., 1551 E. 11th Street, Loveland Colorado, 80537. This legend shall be marked on any reproduction hereof in whole or in part. Receipt of this document shall be deemed to be an acceptance of the conditions specified herein.

DIMENSIONS ARE REPRESENTED AS FOLLOWS: INCH [MM]

|                            |              |
|----------------------------|--------------|
| TOLERANCES EXCEPT AS NOTED |              |
| INCHES                     | MM           |
| X ± 0.02                   | X ±          |
| ANGLES ± 1                 |              |
| DO NOT SCALE THIS DRAWING  |              |
| SCALE                      | SHEET 2 OF 2 |

|               |         |
|---------------|---------|
| DRAWN BY      | DATE    |
| P.SCHIEL      | 2/19/14 |
| ENG. APPROVAL | DATE    |
| PROJECT ENG.  | DATE    |

|  |
|--|
| TITLE  |
| 5" MULTI-LINE<br>CADDY MINI-5 MOUNT<br>DIMENSIONAL DETAILS |



1551 E. 11th. St.  
Loveland, CO 80537  
P: (970) 667-1000  
F: (970) 667-5876  
WWW.COLORADOTIME.COM

|      |                |      |
|------|----------------|------|
| SIZE | DRAWING NUMBER | REV. |
| B    | S2014-001-001  | A    |

4

3

2

1

B

B

A

A

4

3

2

1